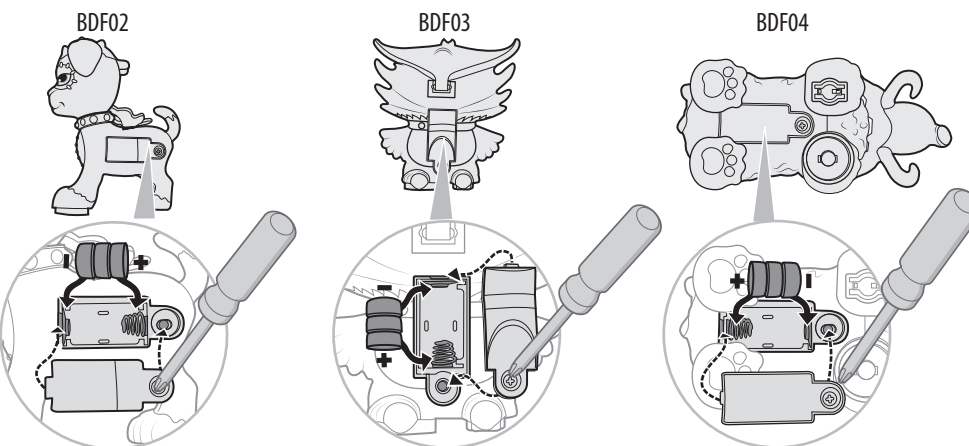
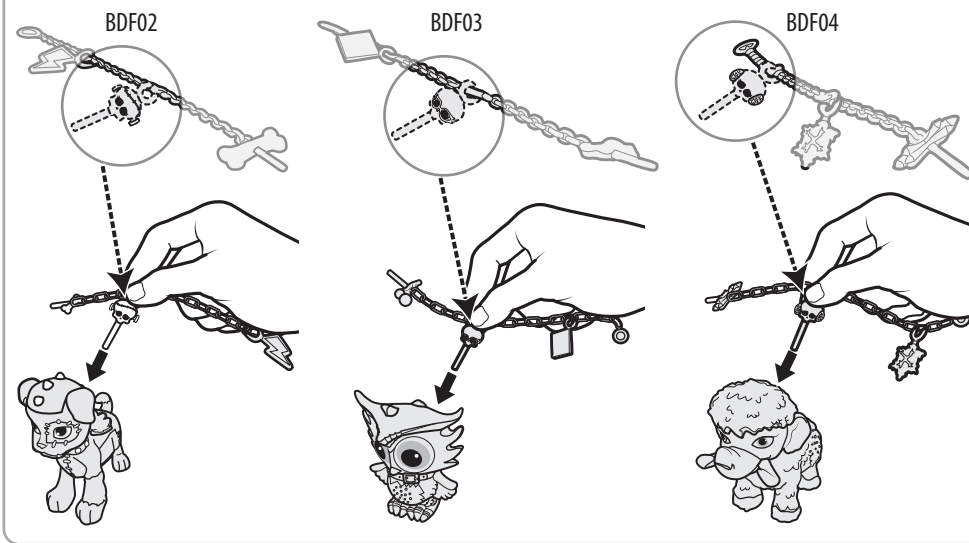


Tip: Charm also can be used as a lock.



Battery Replacement

Replace batteries when sound becomes distorted or lights dim. To replace batteries, use a Phillips head screwdriver (not included) to open battery cover. Insert 3 new AG13 (LR44) button cell batteries as shown. Use either AG13 (LR44) button cell batteries or equivalent. Replace battery cover and tighten screw. When exposed to an electrostatic source, the product may malfunction. If this problem occurs, reset the product by reinstalling the batteries. For longer life use alkaline batteries only.

CONSUMER INFORMATION

Need Assistance? Visit service.mattel.com or call 1-800-524-8697 (US and Canada only).

SERVICE.MATTEL.COM

Mattel, Inc., 636 Girard Avenue, East Aurora, NY 14052, U.S.A. Consumer Relations 1-800-524-8697. Mattel U.K. Ltd., Vanwall Business Park, Maidenhead SL6 4UB. Helpline 01628 500303. Mattel Australia Pty., Ltd., Richmond, Victoria. 3121. Consumer Advisory Service - 1300 135 312. Mattel East Asia Ltd., Room 503-09, North Tower, World Finance Centre, Harbour City, Tsimshatsui, HK, China. Diimport & Diedarkan Oleh: Mattel SEA Ptd Ltd. (993532-P) Lot 13.5, 13th Floor, Menara Lien Hoe, Persiaran Tropicana Golf Country Resort, 47410 PJ. Malaysia. Tel: 03-78803817, Fax: 03-78803867.

MONSTER HIGH

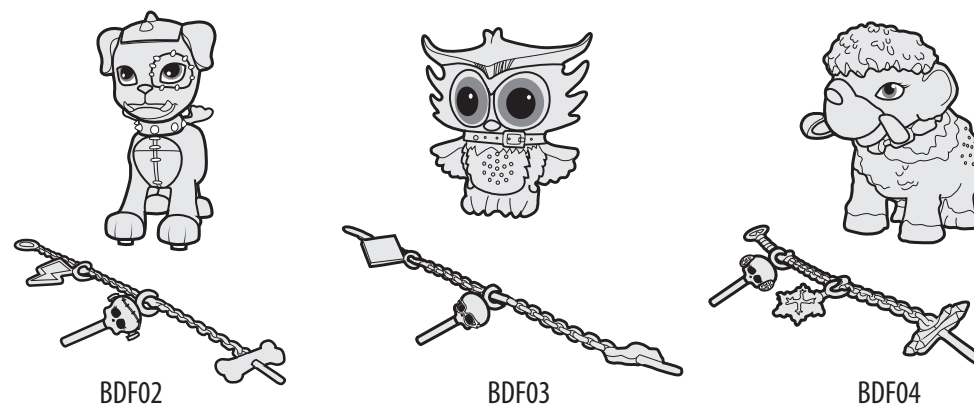
6+



BDF02-0920G1
BDF03
BDF04
Asst. BDF01

INSTRUCTIONS

CONTENTS



Each set sold separately, subject to availability.

Includes 3 AG13 (LR44) button cell batteries. Batteries included are for demonstration purposes only. Dispose of batteries safely.

WARNING:
CHOKING HAZARD - Small parts.
Not for children under 3 years.

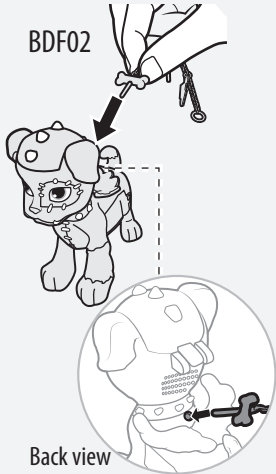
Please remove everything from the package and compare to the contents shown here. If any items are missing, please contact your local Mattel office. Keep these instructions for future reference as they contain important information.

©2013 Mattel. All Rights Reserved.

Let's Play!

Insert leash into the hole on back to exit try-me mode.

BDF02



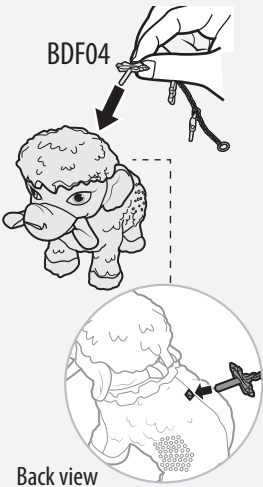
Back view

BDF03



Back view

BDF04

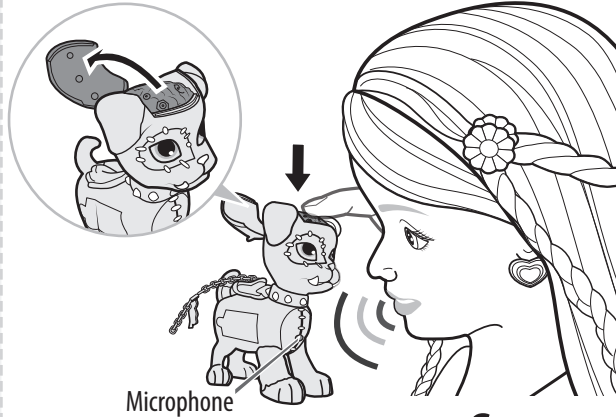


Back view

CAUTION: Leash must stay on the pet's body at all times in order to do recording, playback, and transfer message.

1

A Keep leash in the hole on back.
Press and hold brain to record.

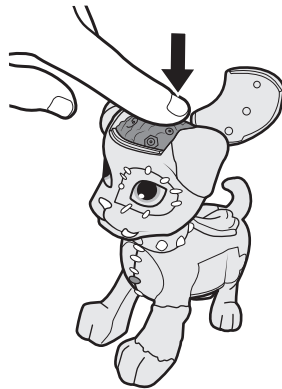


Microphone

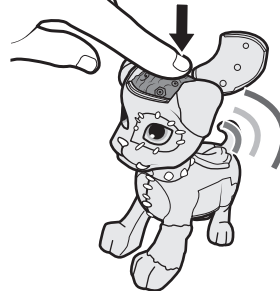
C Pull leash off to secure your secret.

B

Click **ONCE** to play back your secret in a funny voice. Last recording will erase when new recording occurs.



D Click to hear pet's own voice.

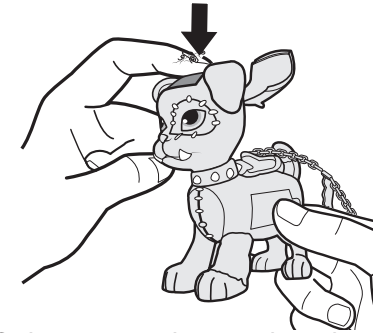


Note: Maximum 10 seconds of audio can be stored.

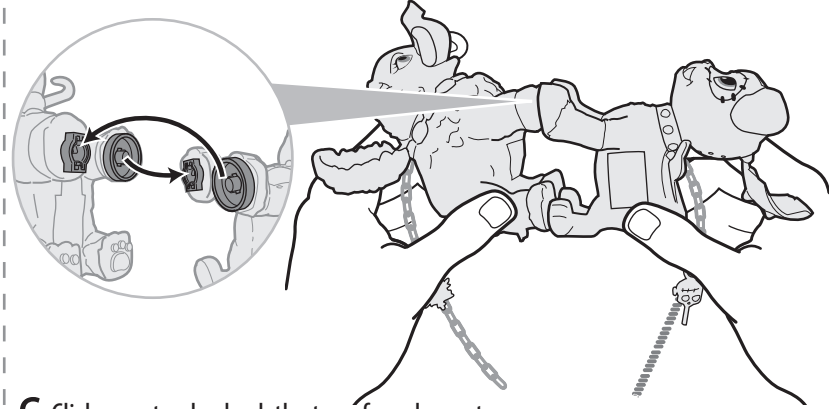
2

Transfer your secret to another pet!
Works only with Secret Creepers™ Pets: BDF02, BDF03, BDF04.

A Double click pet's brain, and brain will start flashing.



B While brain is flashing, connect the pet with another pet through their forefeet as shown. If they are connected correctly, both brains will flash quickly until you hear the other pet's sound and brains stop flashing.



C Click once to play back the transferred secret.

